

Region 11 Guadalupe

Regional Flood Planning Group

The Region 11 Guadalupe Regional Flood Planning Group (RFPG) is soliciting nominations to fill one (1) voting position on the Region 11 Guadalupe RFPG.

Nominees who either operate in or have interests in the Region 11 Guadalupe RFPG are being solicited to represent the following interest groups:

Voting Members

(1 seat) Water Utilities

The Guadalupe RFPG was established by the Texas Water Development Board on October 1, 2020, through the designation of initial flood planning group members. The Guadalupe RFPG consists of portions of Bandera, Bastrop, Blanco, Caldwell, Calhoun, Comal, DeWitt, Fayette, Gillespie, Goliad, Gonzales, Guadalupe, Hays, Karnes, Kendall, Kerr, Lavaca, Real, Refugio, Travis, Victoria and Wilson counties lying within the Guadalupe River Basin.

Article V. Section 3 of the adopted Guadalupe RFPG Bylaws states that in order to be eligible for voting membership, a person must be capable of adequately representing the interest for which a member is sought, be willing to participate in the regional flood planning process, attend meetings, and abide by these bylaws.

Nomination forms may be submitted through email to Lauren Willis at lwillis@gbra.org, or by printing the nomination form, completing it and mailing to 933 E. Court Street, Seguin, TX 78155 Attn: Lauren Willis. Nominations must be received by 5:00pm, Friday, September 10, 2021.

Region 11 Guadalupe RFPG

Member Nomination Form

Date:

Name & Email of person submitting this form (Nominator, may be the same as nominee):

Nominee Name:

Nominee Phone:

Nominee E-mail:

Nominee Mailing Address:

County in which the nominee resides:

Nominee Occupation:

Nomination for Interest Group (Check One)

☐ Agricultural ☐ Counties ☐ Counties ☐ Electric Generating Utilities ☐ Environmental

☐ Flood Districts ☐ Industries ☐ Municipalities ☐ Public ☐ River Authorities

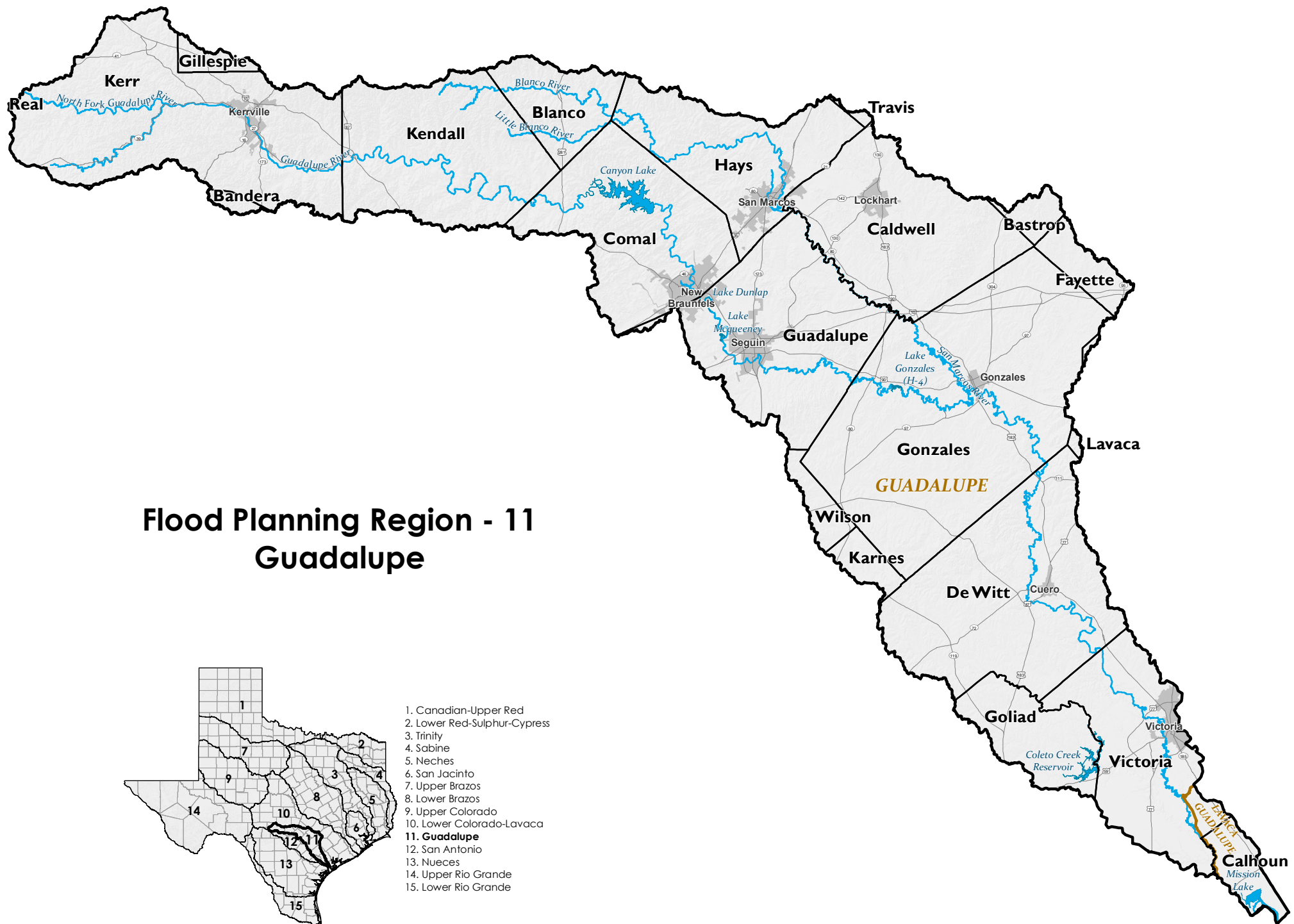
☐ Small Business ☐ Water Districts ☐ Water Utilities

Brief bio and summary of qualifications specific to interest group

General type of flood-related knowledge, experience, and approximately number of years of being involved in flood-related issues.

Please provide 2 references (Name, title/affiliation, phone number)

Please list any optional attachments included (Resume, CV, Resolutions, etc.)



DISCLAIMER: This map was generated by the Texas Water Development Board using GIS (Geographical Information System) software. No claims are made to the accuracy or completeness of the information shown herein nor to its suitability for a particular use. The scale and location of all mapped data are approximate. Map date: 05/01/2020

County boundaries
 Major river basin boundaries
 Major roadways

Major reservoirs
 Major rivers
 County seats

0 10
 Miles

Texas Water Development Board
 1700 North Congress Avenue, Austin, TX 78701
www.twdb.texas.gov - @twdb - facebook.com/twdbboard